

The HAT

magazine



JULY/AUG/SEPT 2004
ISSUE 22

Hats and Gloves



Hat by Dai Rees



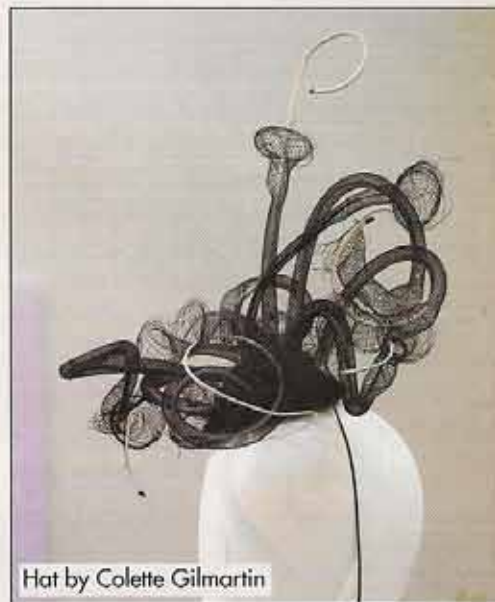
The exhibition attracts all types of visitors



Wall display of quite spectacular gloves



L to r: David Shilling, Andrew Logan and Dai Rees with a young lady who won a prize for the most interesting hat worn by a visitor



Hat by Colette Gilmartin

This is the final exhibition in a trilogy exploring the role of fashion accessories in contemporary culture. The City Gallery in Leicester demonstrates how fashion today can be a means of expressing self-identity by participating in the fantasy world of consumerism. And, that it should be seen as an art object as well as a symbol of experimental self-image.

Within the exhibition are **Hats** from a selection of our most talented contemporary designers, well displayed for the visitor and hatter. **Gloves** large or very tiny in a wall display, or laid randomly on the tables. **Artworks** using the theme of the exhibition include a piece called 'Found and Lost' that uses gloves and mittens that could be yours or mine.

It is interesting, that as the gulf between art and fashion closes, work by certain accessory designers, captured in a completely alternative space

to that of the clothing exhibition and bi-annual collections, can be so exciting, so modern and so ahead of its time. In this context, design becomes very personal, from the designers heart. You can establish from this exhibition who has a sense of humour, who has an eye for fantasy, who has a sense of balance and order and who ridicules national heritage. Gloves and hats are seen together and in their own space, hats as works of art and gloves as a second skin shaped to the body-lines, protecting and adorning.

Gertrude Shilling was an enthusiast and eccentric wearer of hats and her picture has been used on the front cover of the programme in a magnificent oversized bonnet. It was fitting therefore that David Shilling her son, opened the exhibition and together with Dai Rees and Andrew Logan presented prizes to the winners of the day's competitions.

The exhibition includes work from

Hat designers:
 Andrew Logan
 Colette Gilmartin
 Dai Rees
 David Shilling
 Philip Treacy
 Piers Atkinson
 Pip Hackett
 Stephen Jones
 Vivian Westwood
 Glove designers:
 Ellen Bell
 Serena Partridge

Artists:
 Claire Heminsley
 Hew Jones
 Fiona Mathison
 Francois Dupre
 Freddie Robins
 George Waller
 Janet Farahar
 Jennifer Anyan
 Peter Clark
 Stephen Craighill
 Suzanne Langston Jones

Hats and Gloves

The City Gallery
 90 Granby Street
 Leicester LE1 1DE

10th July - 4th of September

Opening times:

Tues - Friday 11am - 6pm
 Saturday 10 - 5pm

Closed:

Sundays, Mondays and Bank Holidays

For further information contact:

Mark Prest, Acting Gallery Manager
 or Andrea Colver, Marketing Assistant

Tel: 0116 223 2060

Fax: 0116 223 2060

E-mail: city.gallery@leicester.gov.uk

Web: www.leicester.gov.uk/citygallery

The exhibition will go on tour to the following galleries:

September 18th - November 14th

McManus Gallery
 Albert Square, Dundee
 Tel: 01382 432084

November 20th - January 1st 2005
Mansfield Museum & Art Gallery
 Leeming Street, Nottingham Tel: 01623 463088

January 17th - April 10th 2005

Hat Works
 Stockport, Manchester
 Tel: 0161 355 7770